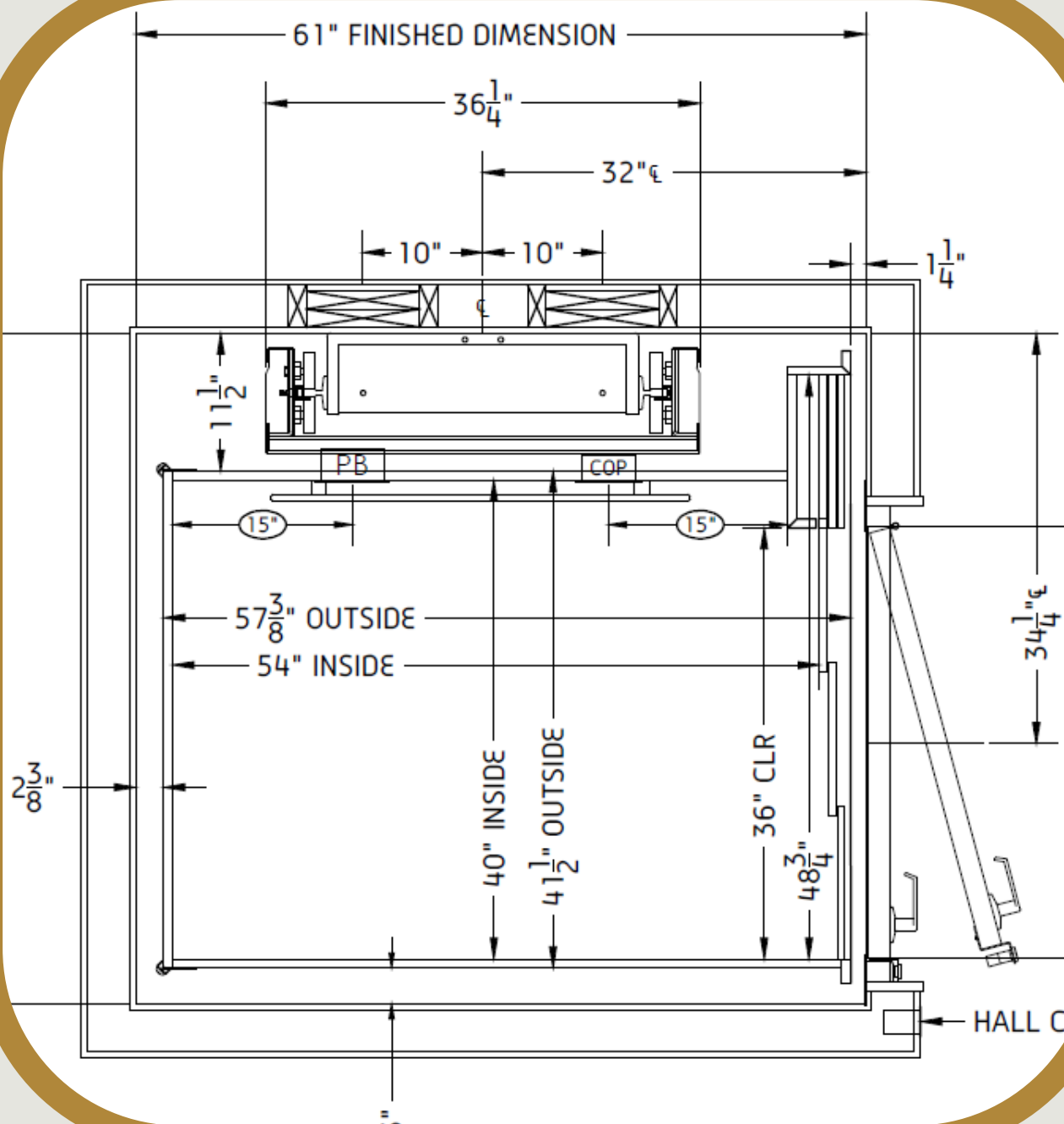


TRADITIONAL ELEVATOR BUILDER GUIDE



PRE- AND POST-INSTALLATION
RESPONSIBILITIES



WELCOME

At C.H. Elevator, we understand that successful elevator installations require a close partnership with builders and contractors. This guide is designed to provide a clear outline of the responsibilities that will help ensure a smooth and efficient process before, during, and after the installation of our elevators.

Whether you're preparing the site for a traditional elevator, a pneumatic vacuum elevator (PVE), or a vertical platform lift, the detailed collaboration between your team and ours is crucial for achieving a high-quality result. By following this guide, you'll be fully equipped to create the ideal conditions for a safe and timely installation, while also meeting the necessary post-installation requirements to ensure the elevator's long-term functionality and performance.



CONTENTS



SECTION 1: FOUNDATION WORK

Proper foundation work is essential for structural stability, ensuring the elevator's safe installation and long-term performance.

SECTION 2: RAIL BACKING AND FRAMING

Ensure proper rail backing and framing to securely support the elevator rails and ensure safe, long-term operation.

SECTION 3: FLUSH FRAMES

Learn about the key parts that make up a flush frame door, including the frame, door panel, and concealed hardware.

SECTION 4: LANDING DOOR SPECIALTIES

Landing door specialties include precise alignment, flush frames, and hardware selection to ensure seamless operation and a polished finish.

SECTION 5: ELECTRIC & PHONE LINE

Electrical and phone work must be properly routed and installed to meet safety codes and ensure the elevator's functionality and emergency communication systems.

SECTION 6: TRIM CARPENTRY & FINISH WORK

Provide the final touches that blend the elevator seamlessly into the home's aesthetic, ensuring a polished and professional look.

SECTION 7: CONTRACTOR RESPONSIBILITIES & TIMELINE

Discover the contractor's role in elevator installation and get an overview of the expected timeline.

SECTION 1

FOUNDATION WORK





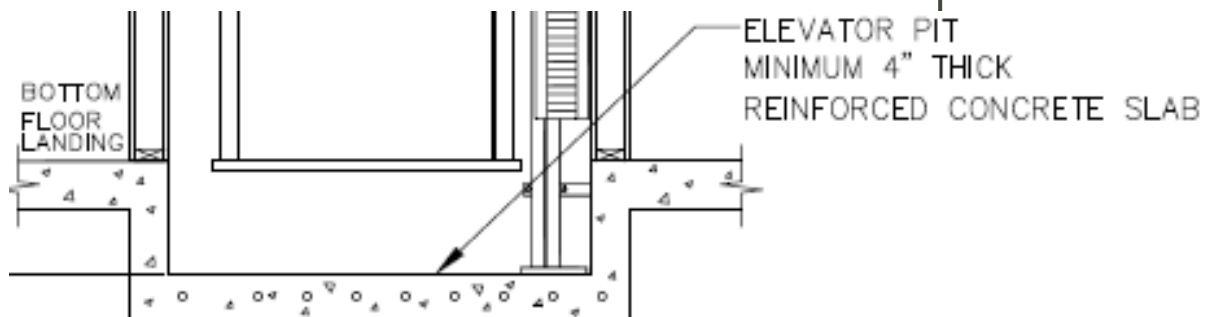
*pit example *unfinished*



*pit example *finished*

01

The elevator pit will be the same dimensions as your finished interior hoistway. Minimum depth is 8". Your drywall will be flush with the top of the pit as shown in the picture.

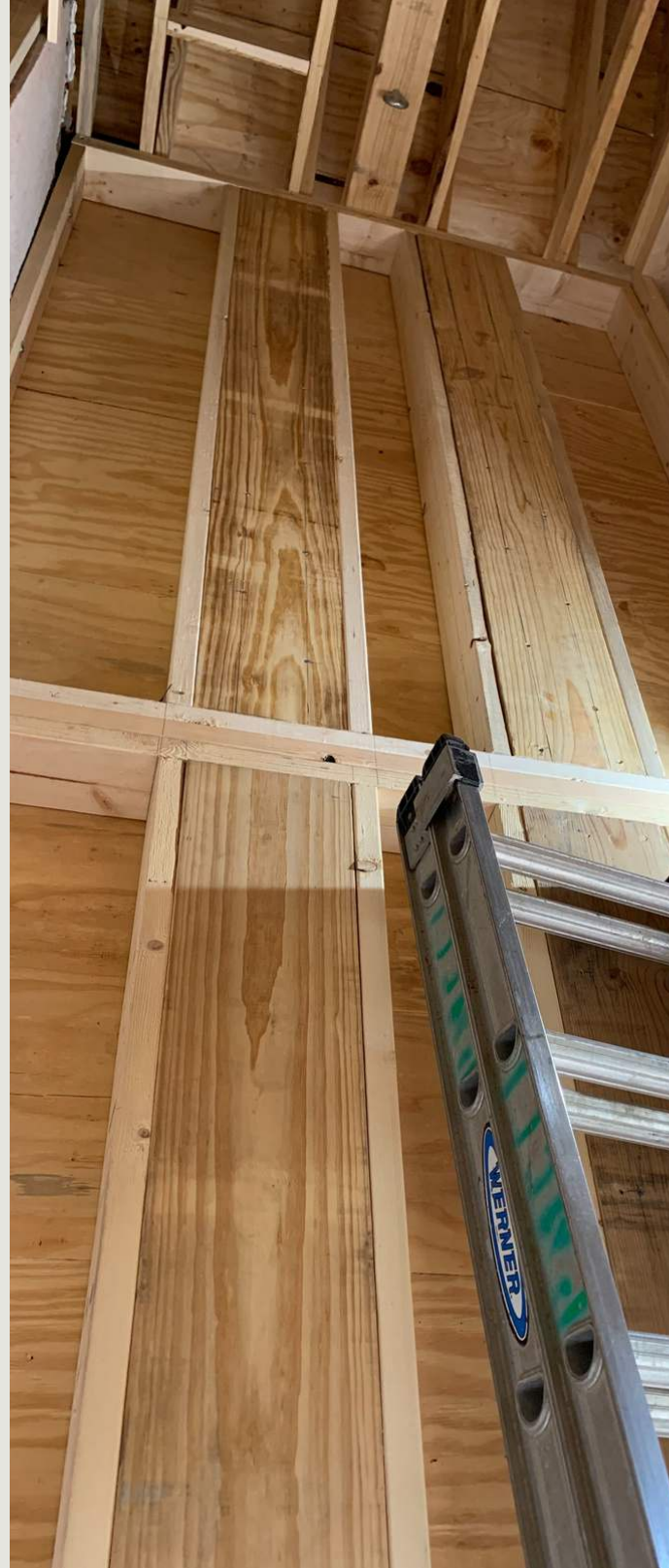


FOUNDATION WORK

SECTION 2

RAIL BACKING & FRAMING

Rail Backing Frame Example

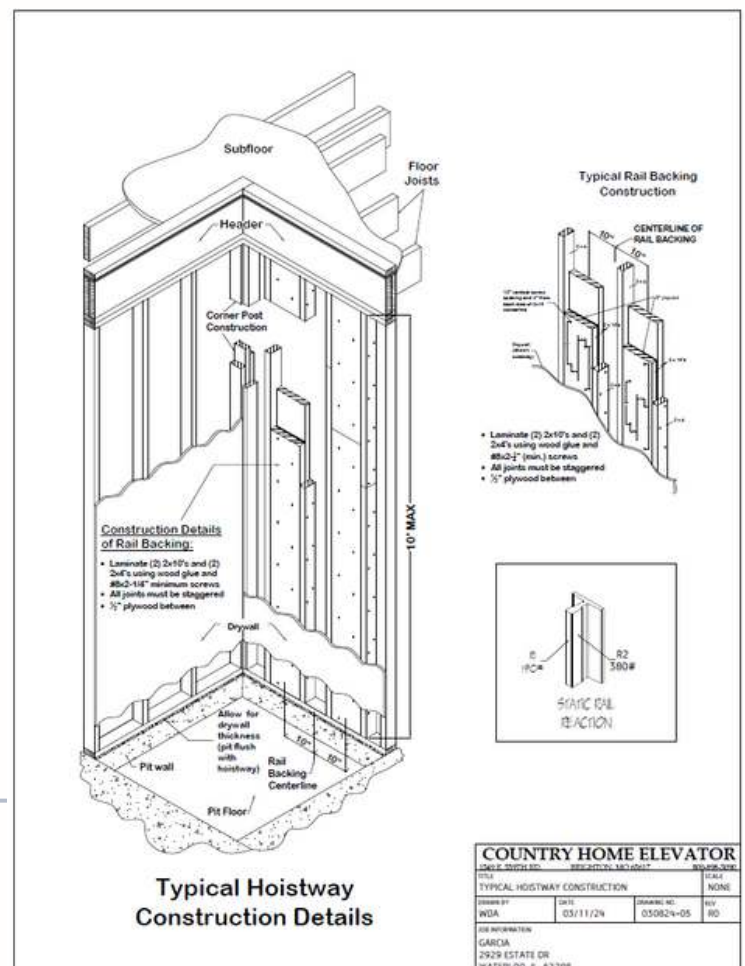




RAIL BACKING & FRAMING

02

- Our CHE guided elevator shop drawings from the manufacturer will walk you through the schematics and layout that will need to be followed for your exact application. All of the dimensions provided are finished interior dimensions.
- We will gather your specific shop drawings from the manufacturer to send to you. This will be a custom guide specifically for your individual project.



INFO@CHELEVATOR.COM

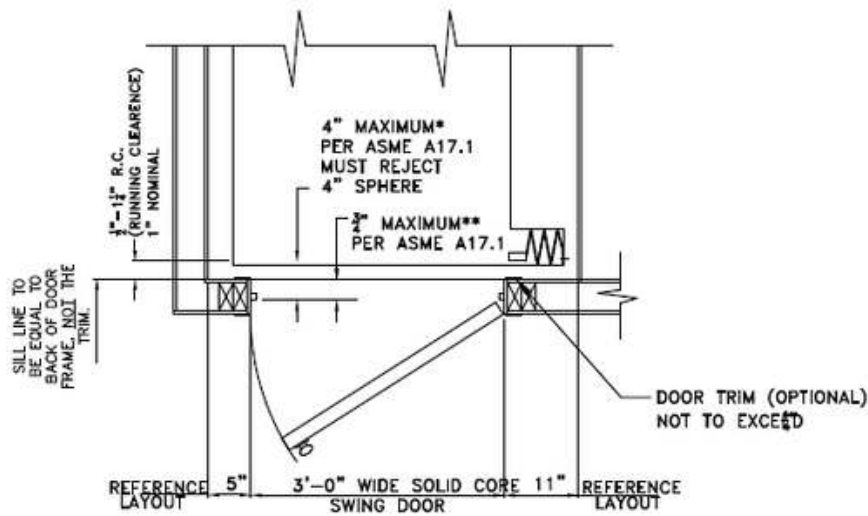
SECTION 3

FLUSH FRAMES

WATCH WALK
THROUGH VIDEO
BY CLICKING
HERE



MAXIMUM DISTANCE ALLOWED BY ASME CODE FOR DOORS AND SILLS ON HOME ELEVATORS



NOTE: AN OUT OF PLUMB SHAFT WILL GREATLY AFFECT RUNNING CLEARANCES AND EXACERBATE THE CODE COMPLIANCE ISSUES. HOISTWAY DOORS MUST BE PLUMB TO EACH OTHER FROM FLOOR TO FLOOR.

RESIDENTIAL ELEVATORS MANUFACTURES AND INSTALLS A FULLY CODE COMPLIANT ELEVATOR PER THE ASME ANSI A17.1 2016 NATIONAL SAFETY CODE FOR ELEVATORS – SECTION 5.3 PRIVATE RESIDENCE ELEVATORS AS MODIFIED BY VARIOUS STATES.
 ** ASME 5.3.1.7.2 OF THE ABOVE REFERENCED CODE CLEARANCE BETWEEN HOISTWAY DOORS OR GATES AND LANDING SILLS AND CAR DOORS OR GATES STATE: THE CLEARANCE BETWEEN THE HOISTWAY DOORS OR GATES AND THE HOISTWAY EDGE OF THE LANDING SILL SHALL NOT EXCEED
 5.3.1.8.3 THE SPACE BETWEEN THE HOISTWAY DOOR AND THE CAR GATE SHALL REJECT A 4 INCH DIAMETER BALL AT ALL POINTS.

FLUSH FRAMES

Meeting specific elevator codes with standard door jambs is very difficult. CHE offers Knock Down Flush Frame kits that are often the easiest way to finish your doorways safely and effectively with all requirements met.

- Rough openings for these frames are different from standard frames. A simple formula is to take your slab dimensions and add 6-1/4" to your slab width and 1-7/8" to your slab height will make your flush frames fit perfectly in your square and plumb openings.
- You will want to have these door frames installed and doors hung before we mobilize to install your elevator. This will help for an efficient installation and give us the opportunity to adjust the door locks at the time of install, giving you a complete and finished installation.

SECTION 4

LANDING DOOR SPECIALTIES





LANDING DOOR SPECIALTIES

Each floor will need a door closing off the elevator shaft. Typically, this is a hinged swing door that matches the door schedule in the home. The door is provided by others (unless specified)

The doors will also need the following:



LANDING DOOR SPECIALTIES



BELL DETENT HARDWARE

to ensure that the door securely closes to the same position every time.

SPRING HINGES

to assist the door proper and complete closure.



DUMMY DOOR HANDLE

(outside) and recessed cup pull (inside): The outside will match the rest of the house and the inside cup pull will be in the shaft.

SECTION 5

ELECTRIC & PHONE LINE

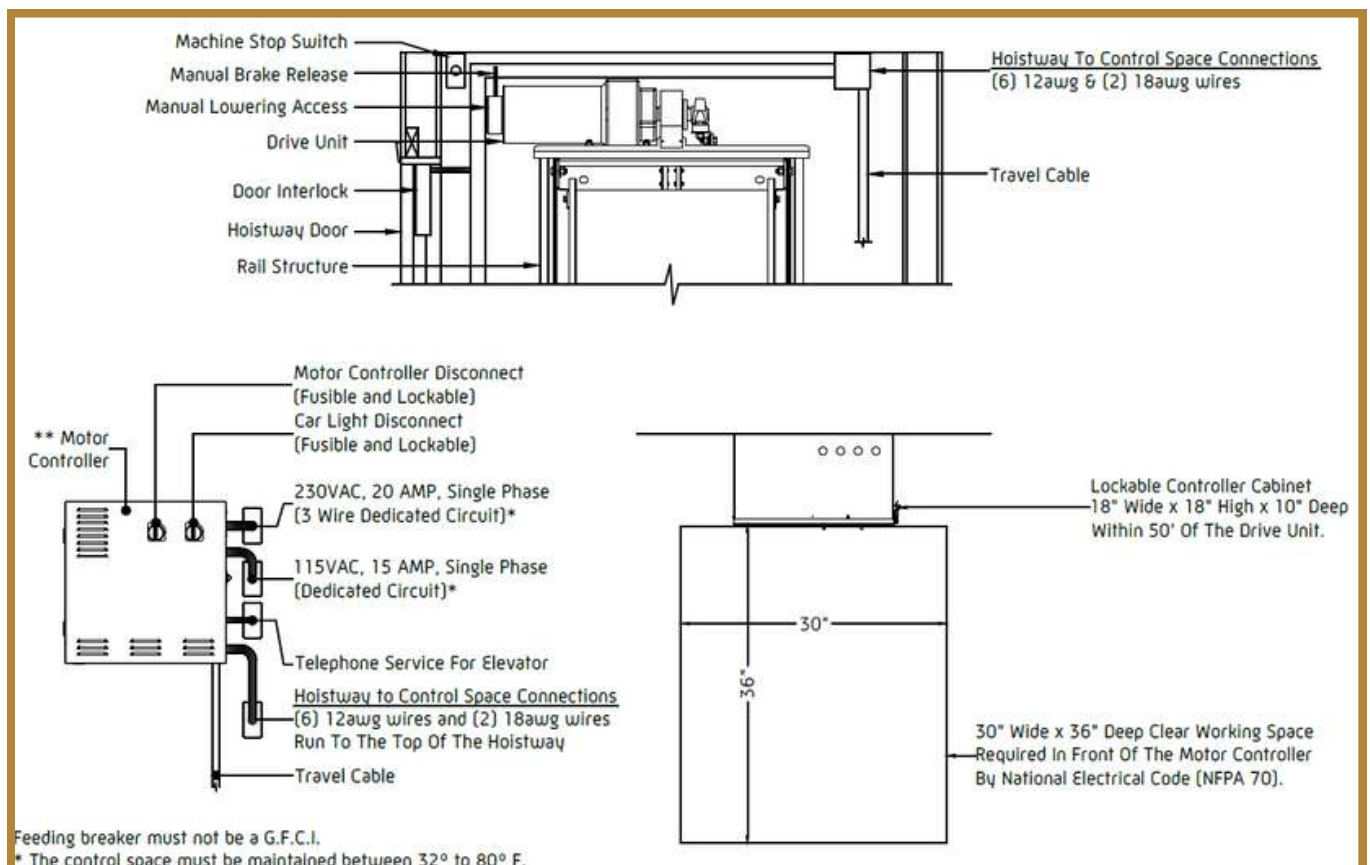


05

SECTION 5

ELECTRIC & PHONE LINE

Electric service is required for operation of the unit that meet all state, local, & national safety codes. A dedicated phone line is needed in all elevator applications. The exact locations of the power locations will need to be site specified by a CHE Mechanic.



SECTION 6

TRIM
CARPENTRY
& FINISH
WORK





TRIM CARPENTRY & FINISH WORK

Finishing the inside of the elevator cab: walls, ceiling, trim, thresholds, and flooring is completed by others (unless specified in an executed contract.)



SECTION 7

RECAP
&
TIMELINE



SECTION 7: RECAP OF CONTRACTOR/BUILDER RESPONSIBILITIES

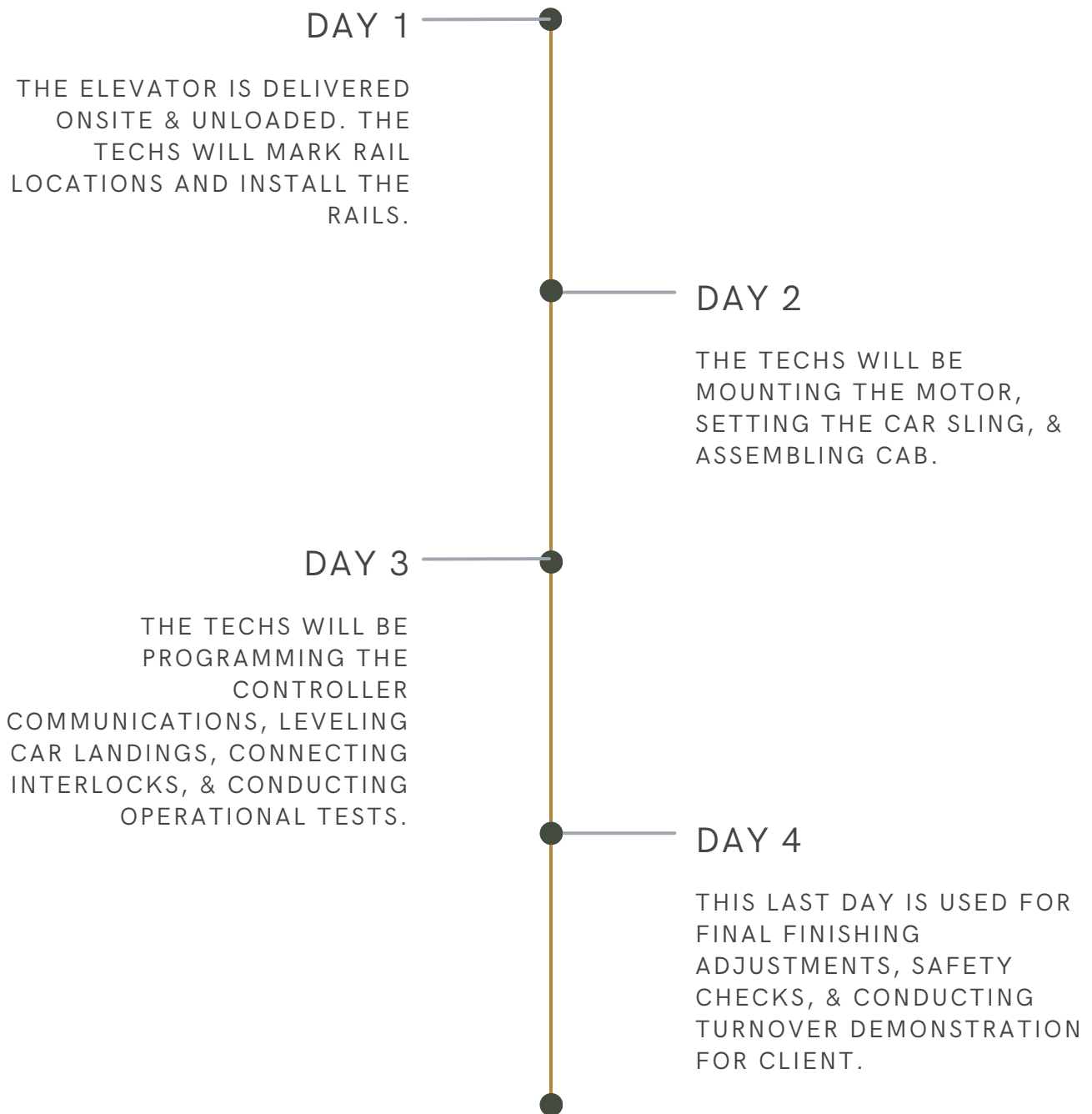
- Enclosed finished legal hoistway, with inside clean, dry, clear, square & plumb
- Wood Frame blocking, 2 x 4 construction
- Level Pit - Minimum of 8" deep (impact load of 5,100lb for traction & 3,900lb for hydraulic)
- Drywall, Mud, & Fire Tape shaft to meet CODE.
- Solid core hoistway doors
- Thresholds installed at each floor landing
- Provide finished flooring in elevator cab.
- Finish interior cab/trim (unless specified)
- Provide 6x6 Beam & EyeLET BOLTS for Hoisting & Mechanic lifeline
- Hoistway door must be recessed to meet threshold requirements ($\frac{3}{4}$ " x 4" rules).
- Install CHE PROVIDED Flush frames, Mortise for hinges, & Hang doors prior to elevator installation.
- ALL landing doors must have ball detent Hardware, spring loaded hinges, dummy handle (Outside, & Cup pull (Inside)
- Equipment access doors for traction elevators must be 8"x8" min
- Electrical – Main power 10/3 ground 30-amp dedicated circuit / Cab light power 12/2 with ground 20-amp dedicated circuit / 1- Live land-based phone line

**This is not be treated as the final scope of work document but as a guide for best practices.*

PROJECT

TIMELINE

TRADITIONAL ELEVATOR TIMELINE: NOTE, THE INSTALLATION TIMETABLE VARIES PROJECT TO PROJECT. THIS IS MEANT TO BE USED AS A ROUGH GUIDANCE TIMELINE.





CASSIE TOBIN, INSTALLATION PROJECT ENGINEER

OFFICE: 417-376-4009

EMAIL: CASSIE.TOBIN@CHELEVATOR.COM

Cassie works with both Jimmy and Bill in aligning project scheduling and technician planning with our clients for all of our new installation projects.

BILL MAJORS, OPERATIONS MANAGER

OFFICE: 417-476-4009 EXT. 123 CELL: 417-406-3890

EMAIL: BILL.MAJORS@CHELEVATOR.COM

Bill oversees our Operations side of the business. He leads our team in ordering units, technical advisement, project planning, and installation/service efficiencies





NEXT STEPS

Thank you for taking the time to read our guide on elevator installations for builders and contractors. We hope you found valuable insights into key aspects like flush frames, trim carpentry, and hardware considerations, all essential for a smooth installation process. At C. H. Elevator, we're committed to making your project a success by offering expert guidance, quality products, and seamless collaboration.

Next steps: If you're ready to take the next step or have questions, feel free to contact us to discuss your project or schedule a consultation. We look forward to working with you!



Thank you!



INFO@CHELEVATOR.COM

WWW.COUNTRYHOMEELEVATOR.COM



SERVICES OFFERED

We work closely with builders and contractors to ensure smooth and successful elevator installations. Our services are broken down into three key categories: elevator installation, flush frame construction, and free consulting services to support your project needs. We also provide a dedicated builder's blog that offers guidance on essential details such as shaftway dimensions, pit construction, and other structural requirements to help you get everything right during pre-construction. For more insights, visit our blog here: [Avoid Elevator Installation Pitfalls](#).

ELEVATOR INSTALLATION

01

We specialize in professional elevator installation, ensuring seamless integration into your project while meeting all structural and safety requirements.

FLUSH FRAME CONSTRUCTION

02

If you prefer, we offer the option to custom-build flush frames for you at an additional cost, ensuring precision and saving you time on the project.

FREE CONSULTING SERVICES

03

We offer free consulting services for builders and contractors, providing expert guidance on elevator specifications, shaftway dimensions, and pre-construction planning to ensure a smooth installation process.